

# Foot Faucet<sup>®</sup>

Made By: Pressure Products - 513 N Link Lane - Fort Collins, Co. 80524 - 970-416-7351

Thank You for choosing a Foot Faucet. Please read instructions completely before starting to install the Foot Faucet. The Foot Faucet is intended to be installed by a qualified person to ensure proper water and electrical connections.

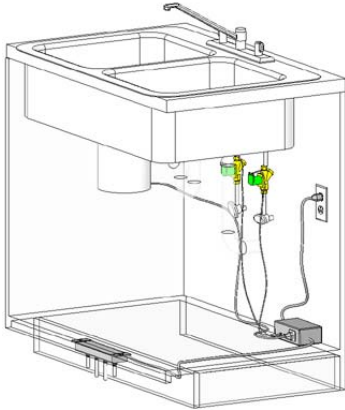
## Foot Faucet Kit



Your Foot Faucet kit includes;

- 1- set of foot levers
- 2- valves with 3/8" compression fittings
- 1- control box
- mounting hardware

## Overview of Foot Faucet



This is a picture of a typical installation of the Foot Faucet system. **TURN OFF WATER SUPPLY VALVES.** Mount levers to underside of cabinet with supplied bolts, drill a 1/2" hole in the floor of the cabinet for the control cable, then cut out a 3.25" section of each water supply tube (or use a threaded hose fitting) and place the Foot Faucet valves in-line (valve must point correct direction). That's all there is to it!

The components are plugged into the control box and the water valves are turned back on.

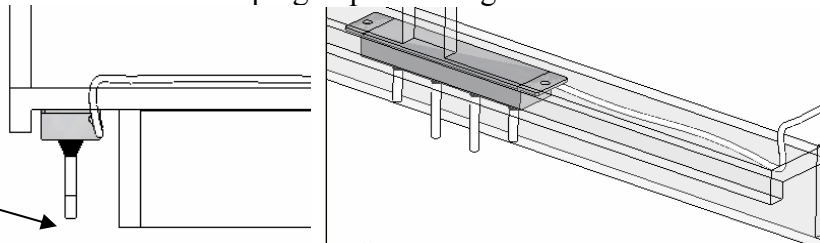
The Foot Faucet gets power from the outlet for the garbage disposal, so in order to make the Foot Faucet work, turn on your garbage disposal wall switch then turn on the water faucets to full blast, then push the levers. Leave the wall switch and knobs (lever) for hot and cold water in "on" positions.

## Detailed Instructions for Foot Faucet Installation

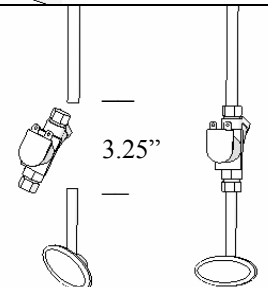
1. TURN OFF WATER SUPPLY VALVES.

2. Mount pedal assembly to the underside of the cabinet floor with included hardware. Shims can be used to get the levers closer to the floor, the levers can be ground shorter with a bench grinder (or a hand file) if they scrape on the floor. Measure the depth of the toe space in the cabinet and drill a 1/2" hole in the floor of the cabinet for the plug to pass through.

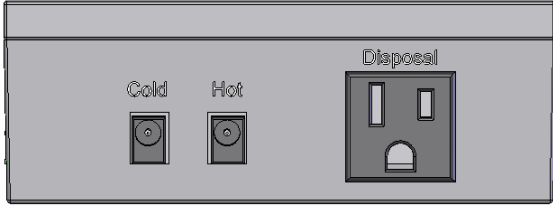
1/4" to 3/4" clearance to floor.



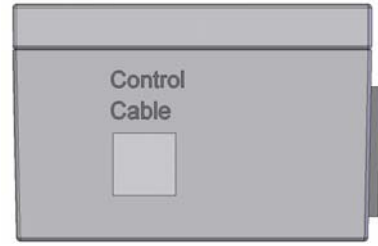
3. There are options for this. (a) Cut out a 3.25" section from each water supply tube and place Foot Faucet valves in-line. (b) Get threaded hose with a 3/8" compression end for the Foot Faucet valve and use just the threaded part of the supplied fitting. (c) Your particular arrangement of fittings may require additional hardware. Be sure valve is pointing the correct direction. The arrow on the valve should point in the direction of water flow (the end with the electrical connectors points toward the sink).



4. Connect valve electrical plugs to control box jacks, remove existing garbage disposal plug from wall outlet and plug into control box.



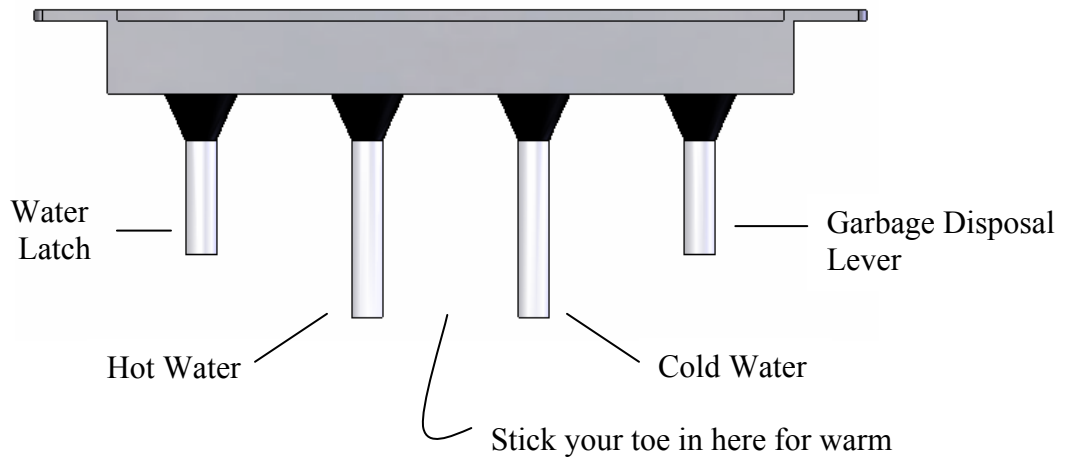
5. Connect Control Cable Plug to control box.



6. Plug in AC power cord into the outlet in the sink cabinet that the garbage disposal used to be plugged into. If you do not have a garbage disposal, you can still use the water controls.

7. Turn on water shut-off valves. Turn on your garbage disposal switch on wall like you want to run the garbage disposal. This sends power to the foot faucet system and it is now ready to use. Turn on hot and cold faucets to full blast and press the appropriate foot pedal.

The hot and cold water buttons turn on the water as long as they are held down. Pressing the Hot Latch button once will turn on both the hot and cold water and leave them on, this allows you to use the faucet handle like normal. Tap the Hot Water lever to turn the latch off.



Trouble shooting – Problem	Solution
Pressing levers does nothing	<ol style="list-style-type: none"> <li>1. Turn on Garbage Disposal wall switch</li> <li>2. Check that connectors are properly inserted</li> </ol>
Hot and Cold levers are backwards	<ol style="list-style-type: none"> <li>1. Switch hot and cold plug-in jacks on control box</li> </ol>
Valve clicks but water does not come out	<ol style="list-style-type: none"> <li>1. Turn on water faucet handle(s) (hot and cold) to full blast.</li> <li>2. Check that valves are pointing the correct direction. The arrow points toward the sink.</li> </ol>
Everything works except the garbage disposal	<ol style="list-style-type: none"> <li>1. Check disposal overload breaker on disposal motor</li> </ol>

If you have any questions or problems about the installation or operation of the Foot Faucet, please contact customer service at 1-888-729-3053.